



FORBES & WALKER TEA BROKERS (PVT) LIMITED

46/38, Nawamawatha, P.O. Box 60, Colombo 2, Sri Lanka. Telephone: (94-11) 4767222
Tele fax: (94-11) 2439373 E-mail: ftb@forbeswalker.com Web site: www.forbestea.com



MOST COMPREHENSIVE WEBSITE ON TEA
www.forbestea.com

WEEKLY TEA MARKET REPORT SALE NO: 26 - 04TH/ 05TH JULY 2023

ORDER OF SALE

<u>EXESTATE</u>	<u>LG Large Leaf/Semi Leafy/LG Small Leaf/BOPIA /Premium</u>	<u>High & Medium/Off Grade/Dust</u>
1. John Keells PLC	John Keells PLC	Bartleet Produce Marketing (Pvt) Ltd
2. Lanka Commodity Brokers (Pvt) Ltd	Lanka Commodity Brokers (Pvt) Ltd	Lanka Commodity Brokers (Pvt) Ltd
3. Bartleet Produce Marketing (Pvt) Ltd	Asia Siyaka Commodities PLC	Ceylon Tea Brokers PLC
4. Mercantile Produce Brokers (Pvt) Ltd	Mercantile Produce Brokers (Pvt) Ltd	Eastern Brokers Ltd
5. Asia Siyaka Commodities PLC	Eastern Brokers Ltd	John Keells PLC
6. Forbes & Walker Tea Brokers (Pvt) Ltd	Forbes & Walker Tea Brokers (Pvt) Ltd	Asia Siyaka Commodities PLC
7. Eastern Brokers Ltd	Ceylon Tea Brokers PLC	Mercantile Produce Brokers (Pvt) Ltd
8. Ceylon Tea Brokers PLC	Bartleet Produce Marketing (Pvt) Ltd	Forbes & Walker Tea Brokers (Pvt) Ltd

At this week's sale 11,483 lots totalling 6,339,603 kgs were on offer. The breakdown is as follows:

	<u>LOTS</u>	<u>QUANTITY</u>
Ex Estate	855	995,296
Main Sale - High & Medium	1,597	758,741
Low Grown - Leafy	2,247	969,986
Low Grown - Semi Leafy	1,675	756,798
Low Grown - Tippy	1,697	834,249
Premium Flowery	263	46,550
Off Grades	2,536	1,366,442
Dust	613	611,541
TOTAL	11,483	6,339,603
Re - Prints	761	399,352

Buyers Prompt : 11/07/2023

Sellers Prompt : 12/07/2023

QUALITY

A selection of Westerns were improved, whilst the others together with teas from the Eastern sector and the Low Grown were similar to last.

MARKET

Irregular

HIGH GROWN TEAS

BOP

Best Western's - Few select invoices were firm and dearer, whilst the others were irregular and often easier. Teas in the Below Best category declined Rs. 50 per kg and more, whilst the Plainer sorts were Rs. 20-40 per kg lower. Nuwara Eliya's were mostly unsold. Uda Pussellawa's - Better sorts were sharply lower, whilst the others sold around last week's levels. Uva's - Few select coloury teas appreciated Rs. 50-100 per kg, whilst the others declined by Rs. 50 per kg and more.

BOPF

Best Western's, where quality was maintained, were firm and Rs. 50 per kg easier, whilst the others declined further. In the Below Best category, select coloury sorts appreciated Rs. 30-50 per kg, whilst the others declined by a similar margin. Plainer sorts were irregular and barely steady. Nuwara Eliya's were mostly unsold. Uda Pussellawa's - Teas in the higher price bracket were sharply lower, whilst the others sold around last week's levels. Uva's declined by Rs. 50-70 per kg and more.

OP/OPA

Well-made OP's which commenced dearer by Rs. 50-100 per kg were firm on last towards the closure of sale, whilst the others together with teas at the lower end were firm on last. OPA's, in general, were firm to easier.

PEKOE/PEKOE1

A limited selection of flavoury PEK's that were available were irregularly easier. Orthodox Leafy PEK/PEK1's, in general, were firm to dearer by Rs. 50 per kg and more at times. A few better Rotovane PEK's gained considerably following special inquiry, whilst the others were irregular and mostly lower.

FBOP/FBOPF1

A limited selection of flavoury FBOP's that were available were irregularly easier. Well-made Orthodox Leafy FBOP's together with the cleaner Below Best sorts were firm to dearer by Rs. 50-100 per kg, whilst the others at the lower end too were dearer by Rs. 50 per kg. Well-made FF1's gained Rs. 50-100 per kg, whilst teas at the lower end were firm on last.

QUOTATIONS IN (Rs/kg)	BOP		BOPF		PEKOE / FBOP		OP	
Sale Date	27/28 JUN	04/05 JUL	27/28 JUN	04/05 JUL	27/28 JUN	04/05 JUL	27/28 JUN	04/05 JUL
Best Westerns	900-1000	900-1020	900-1100	900-1220	1040-1380	1080-1360	920-1080	940 - 980
Below Best Westerns	760 - 890	760 - 890	780 - 890	780 - 890	960-1000	980-1060	880 - 900	880 - 920
Plainer Westerns	680 - 750	640 - 750	700 - 770	660 - 770	780 - 940	800 - 960	720 - 860	730 - 870
Nuwara Eliyas	870 - 920	910	N/A	750	1000-1200	880-1380	N/A	1020
Brighter Udupussellawas	700 - 740	790	700 - 830	820 - 900	1020-1650	1040-1600	920-1100	920-1160
Other Udupussellawas	640 - 660	650	640 - 670	650 - 750	780-1100	800-1020	760 - 900	760 - 900
Best Uvas	740 - 880	810-1000	800 - 890	780 - 830	1100-1650	1120-1500	980-1160	980-1120
Other Uvas	640 - 700	650 - 790	740 - 790	680 - 720	780-1080	800-1100	740 - 960	750 - 960

MEDIUM GROWN TEAS

BOP

Large Leaf well-made types were up to Rs. 50 per kg dearer, whilst the others too were firm and dearer to a lesser extent. Small neat leaf teas were generally firm.

BOPF

Rs. 20-40 per kg dearer.

OP/OPA

Well-made OP's which commenced dearer by Rs. 50-100 per kg were firm on last towards the closure of sale, whilst the others together with teas at the lower end were firm on last. OPA's, in general, were firm to easier particularly at the lower end.

PEKOE/PEKOE1

PEK/PEK1's, in general, were firm to dearer by Rs. 50 per kg and more at times.

FBOP/FBOPF1

Well-made FBOP's together with the cleaner Below Best sorts were irregular following quality, whilst the others at the lower end were firm to dearer. Well- made FFI's gained Rs. 50-100 per kg, whilst teas at the lower end were firm on last.

QUOTATIONS IN (Rs/kg)	BOP		BOPF		PEKOE / FBOP		OP	
Sale Date	27/28 JUN	04/05 JUL	27/28 JUN	04/05 JUL	27/28 JUN	04/05 JUL	27/28 JUN	04/05 JUL
Good Mediums	800-1000	900-1240	830 - 860	780 - 880	1180-2550	1150-2450	880-1420	900-1400
Other Mediums	720 - 740	N/A	650 - 740	680 - 750	780-1100	800-1120	760 - 860	760 - 890

Contd...4

		MOST COMPREHENSIVE WEBSITE ON TEA www.forbestea.com					
Page 4		Page 4					
UNORTHODOX TEAS							
HIGH GROWN		BP1s - Mostly unsold. PF1s - Where quality was maintained, prices were barely steady, whilst the others declined irregularly.					
MEDIUM GROWN		BP1s - Generally firm. PF1s - Few select coloury types were firm and tended dearer, whilst the lighter thinner liquoring types declined by Rs. 50-70 per kg.					
LOW GROWN		BP1s - Barely steady. PF1s - Sold around last.					
QUOTATIONS IN (Rs/kg)		BP 1		PF 1			
Sale Date		27/28 JUN	04/05 JUL	27/28 JUN	04/05 JUL		
High Grown		N/A	750 - 780	700 - 900	710 - 920		
Medium Grown		690 - 770	640 - 780	690 - 820	600 - 880		
Low Grown		850 - 860	810	900-1260	1000-1240		
OFF GRADES							
FGSI/FGS		Clean leaf Best varieties were easier by Rs. 50-80 per kg and more following quality. A few cleaner Below Best varieties where quality maintained were firm, whilst the others were irregularly lower. Teas at the bottom end of the market were easier by Rs. 20-40 per kg and more following quality. Low Growns - Select cleaner invoices of the Best category maintained, whilst the Below Best and poorer sorts were easier by Rs. 30-50 per kg. CTC's - Clean leaf invoices of the Best category were firm. Below Best and poorer sorts which commenced firm to easier by Rs. 10-20 per kg, declined by Rs. 40-80 per kg as the sale progressed.					
BROKENS		Best varieties were firm to easier by Rs. 10-20 per kg. Below Best and poorer sorts declined by Rs. 40-50 per kg, in general.					
BOP1A		Best varieties appreciated by Rs. 20-40 per kg, whilst select cleaner invoices appreciated by Rs. 30-50 per kg and more. Below Best and teas at the bottom end of the market, in general, declined by Rs. 20 per kg.					
QUOTATIONS IN (Rs/kg)		HIGH		MEDIUM		LOW	
Sale Date		27/28 JUN	04/05 JUL	27/28 JUN	04/05 JUL	27/28 JUN	04/05 JUL
Better Fannings (Orthodox)		780 - 840	740-760	780 - 800	750-840	780 - 840	750-850
Better Fannings (CTC)		730	N/A	750	700-710	1140	1200
Other Fannings (Orthodox)		630 - 770	620-730	620 - 770	600-740	610 - 770	570-740
Other Fannings (CTC)		N/A	690	700	660-690	640 - 730	600-720
Good Brokens		770 - 880	730-890	780 - 890	730-900	780-1160	740-1120
Other Brokens		650 - 750	650-720	670 - 750	640-720	660 - 750	610-720
Better BOP1As		750 - 790	740 - 850	750 - 900	730 - 940	760-1280	740-1360
Other BOP1As		720 - 740	700 - 720	720 - 740	700 - 720	720 - 740	700 - 720
DUSTS							
DUST1		Select Best Dust1's were firm to dearer by Rs. 30-50 per kg, whilst the Best Dust1 varieties appreciated further by Rs. 40-60 per kg. Clean leaf brighter teas in the Below Best category appreciated by Rs. 20-40 per kg, whilst the Plainer varieties declined by the same margin. The poorer sorts were firm to irregularly dearer by Rs. 20-40 per kg. Best Low Grown varieties were firm. Teas in the Below Best category declined by Rs. 30-50 per kg, whilst the poorer sorts declined further.					
		Best High and Medium Grown CTC's were firm to selectively easier by Rs. 20-40 per kg. Below Best varieties and the poorer sorts were mostly firm. The Low Grown varieties appreciated significantly by Rs. 60-80 per kg and more at times.					
DUST		Clean leaf secondaries appreciated by Rs. 30-40 per kg, whilst the poorer sorts were firm to easier by Rs. 20-40 per kg. Best Low Grown varieties were firm, whilst the poorer sorts declined by Rs. 20-30 per kg.					
QUOTATIONS IN (Rs/kg)		HIGH		MEDIUM		LOW	
Sale Date		27/28 JUN	04/05 JUL	27/28 JUN	04/05 JUL	27/28 JUN	04/05 JUL
Better Primary Dust (Orthodox)		1020-1420	1080-1460	800 - 900	850-1020	850 - 980	860-1000
Better Primary Dust (CTC) P. Dust		760 - 900	750-900	750 - 810	780-920	900-1100	1000-1280
Below Best Primary Dust (Orthodox)		860-1000	810-1060	710 - 800	730-840	730 - 840	730-850
Other Primary Dust (CTC) P. Dust		680 - 750	680-740	640 - 740	710-770	800 - 900	600-980
Other Primary Dust (Orthodox)		590 - 850	590-800	570 - 700	570-720	550 - 720	550-720
Better Secondary Dust		700 - 790	740-880	680 - 740	660-720	850-1160	840-1140
Other Secondary Dust		560 - 690	520-730	570 - 670	560-650	520 - 830	530-830
* Note. High & Medium quotations are a combination of HIGH GROWNS (Western High and Uva High) MEDIUM GROWNS (Western Medium and Uva Medium).							
Contd...5							
FORBES & WALKER TEA BROKERS (PVT) LTD SALE OF - 04TH/ 05TH JULY 2023							

		MOST COMPREHENSIVE WEBSITE ON TEA			
		www.forbestea.com			
Page 6			Page 6		
TOP PRICES IN (RS/KGS) - SALE OF 04TH/ 05TH JULY 2023					
WESTERN MEDIUM			Lumbini	OPA	1,900.00
Uplands	BOP		Lumbini	PEK	2,450.00
Craighead	BOPSp	@	Golden Garden	PEK1	2,400.00
Vellai Oya	BOPF/BOPFSp	@	880.00	UVA MEDIUM	
Harangalla	BOP1	@	1,900.00	Demodera 'S'	BOP @ 1,080.00
Dartry Valley	BOP1	@	1,550.00	Dickwella	BOP 1,060.00
Craighead	FBOP/FBOP1	@	2,000.00	El Teb	BOP @ 1,000.00
Harangalla	FBOP/FBOP1	@	1,800.00	Halpewatte Uva	BOPSp 1,040.00
Dartry Valley	FBOPF/FBOPF1		1,380.00	Demodera 'S'	BOPSp @ 980.00
Dartry Valley	OP/OPA		1,400.00	Dickwella	BOPF/BOPFSp @ 1,040.00
Craighead	OP1	@	1,950.00	Sarnia Plaiderie	BOP1 @ 1,400.00
Craighead	PEK/PEK1	@	2,450.00	Misty Uva	BOP1 @ 1,380.00
Uplands	PEK/PEK1		2,100.00	Maratenne	BOP1 1,380.00
Dartry Valley	PEK/PEK1	@	2,050.00	Adawatte	FBOP/FBOP1 1,550.00
WESTERN HIGH			Gonakelle	FBOPF/FBOPF1	1,160.00
Wattegodde	BOP		1,020.00	Halpewatte Uva	FBOPF/FBOPF1 1,160.00
Glentilt	BOP		1,020.00	Tinioya	FBOPF/FBOPF1 1,160.00
Bearwell	BOP	@	980.00	Telbedde	OP/OPA 1,160.00
Somerset	BOP	@	960.00	Telbedde	OP1 @ 1,500.00
Wattegodde	BOPSp		1,240.00	Halpewatte Uva	OP1 1,500.00
Robgill	BOPF/BOPFSp		1,220.00	Dickwella	PEK/PEK1 @ 1,800.00
Glenugie	BOPF/BOPFSp		1,100.00	UVA HIGH	
Tillyrie	BOPF/BOPFSp	@	1,060.00	Uvakellie	BOP 1,040.00
Alton	BOPF/BOPFSp	@	1,060.00	Uva Highlands	BOP @ 900.00
Ingestre	BOPF/BOPFSp		1,060.00	Bandaraeliya	BOP @ 790.00
Torrington	BOP1	@	1,220.00	Nayabedde	BOP @ 790.00
Bogahawatte	BOP1		1,220.00	Ranaya	BOPSp 1,100.00
Queensberry	FBOP/FBOP1	@	1,200.00	Uva Highlands	BOPF/BOPFSp 920.00
Weddemulla	FBOP/FBOP1		1,200.00	Uvakellie	BOPF/BOPFSp 900.00
Torrington	FBOP/FBOP1	@	1,020.00	Bandaraeliya	BOPF/BOPFSp @ 820.00
Venture	FBOP/FBOP1		1,020.00	Craig	BOP1 1,380.00
Weddemulla	FBOPF/FBOPF1		1,060.00	Mount Uva	FBOP/FBOP1 1,280.00
Torrington	FBOPF/FBOPF1	@	1,020.00	Gonamotawa	FBOPF/FBOPF1 @ 1,140.00
St. Andrews	OP/OPA		980.00	Glenanore	FBOPF/FBOPF1 @ 1,120.00
Torrington	OP/OPA	@	960.00	Uva Highlands	FBOPF/FBOPF1 1,120.00
Venture	OP1		1,340.00	Mount Uva	OP/OPA 1,120.00
Bearwell	PEK/PEK1	@	1,480.00	Oodoowerre	OP1 1,300.00
NUWARA ELIYAS			Glenanore	PEK/PEK1 @ 1,500.00	
Lovers Leap	BOP		910.00	Craig	PEK/PEK1 1,500.00
Lovers Leap	BOPF/BOPFSp		750.00	Mount Uva	PEK/PEK1 1,500.00
Court Lodge	FBOP/FBOP1	@	1,300.00	UNORTHODOX HIGH	
Court Lodge	OP/OPA	@	1,020.00	Ulugedara CTC	PF1 920.00
Court Lodge	PEK/PEK1	@	1,380.00	Mount Vernon CTC	BP1 @ 780.00
Kenmare	PEK/PEK1	@	1,040.00	Mount Vernon CTC	BPS @ 720.00
UDAPUSSELLAWAS			UNORTHODOX MEDIUM		
Luckyland	BOP		790.00	Donside CTC	PF1 880.00
Luckyland	BOPSp		790.00	Donside CTC	BP1 @ 780.00
Blairlomond	BOPSp	@	690.00	Ringwood CTC	BPS @ 650.00
Kirklees	BOPF/BOPFSp		900.00	Aultmore CTC	BPS 650.00
Blairlomond	BOPF/BOPFSp	@	810.00	UNORTHODOX LOW	
Blairlomond	BOP1	@	1,120.00	Kalubowitiyana CTC	PF1 @ 1,240.00
Alma	FBOP/FBOP1		1,240.00	Liyonta CTC	PF1 1,240.00
Delmar	FBOP/FBOP1	@	1,120.00	Hingalgoda CTC	PF1 1,240.00
Alma	FBOPF/FBOPF1		1,120.00	Suduwelipothahena CTC	BP1 @ 810.00
Alma	OP/OPA		1,160.00	PREMIUM FLOWERY	
Alma	OP1		1,460.00	Muswenna	FBOPFSp @ 2,950.00
Alma	PEK/PEK1		1,600.00	New Falcon Lanka	FBOPFExSp 3,650.00
Delmar	PEK/PEK1	@	1,500.00	Morawakkorale	FBOPFExSp @ 3,400.00
LOW GROWNS			Galatara	FBOPFExSp1	4,250.00
Hidellana	BOP		2,500.00	DUSTS	
Ihalapanapitiya	BOPSp		1,850.00	Mattakelle	DUST1 1,460.00
Pothotuwa	BOPF	@	1,700.00	Suduwelipothahena CTC	PDUST @ 1,280.00
Chandrika Estate	BOPF	@	1,100.00	Ceciliyan CTC	PDUST @ 1,240.00
Kolonna Super	BOPFSp		1,460.00	OFF GRADES	
Sithaka	FBOP		2,350.00	Haritha	FGS/FGS1 850.00
Pothotuwa	FBOP	@	2,200.00	Hingalgoda CTC	PFGS 1,200.00
Wattahena	FBOP1		1,800.00	Unawatuna	BM 1,120.00
Ceyenta	FBOPF	@	1,480.00	Hidellana	BP 1,020.00
Hidellana	FBOPF		1,480.00	Allen Valley	BP 1,020.00
Pothotuwa	FBOPF1	@	1,550.00	Galatara	BOP1A 1,360.00
Adams View	FBOPF1	@	1,550.00	Chandrika Estate	BOP1A @ 1,340.00
Galaboda Group	FBOPF1		1,550.00	Aldora	BOP1A 1,340.00
New J.S.P	FBOPF1		1,550.00		
Hidellana	FBOPF1		1,550.00		
New Mount Carmel	FBOPF1	@	1,500.00		
Lumbini	FBOPF1		1,500.00		
New Vithanakande	BOP1		2,900.00		
Pothotuwa	OP1	@	3,500.00		
Lumbini	OP		1,650.00		
@ Sold by Forbes & Walker Tea Brokers (Pvt) Ltd/ **All Time Record Price * Equal All Time Record Price					
FORBES & WALKER TEA BROKERS (PVT) LTD SALE OF - 04TH/ 05TH JULY 2023					

PUBLIC AUCTION / GROSS SALE AVERAGES

SALE NO : 25
SALE OF : 27TH/ 28TH JUNE 2023

	2023				2022				2021			
	WEEKLY		TODATE		WEEKLY		TODATE		WEEKLY		TODATE	
	SLR	USD	SLR	USD	SLR	USD	SLR	USD	SLR	USD	SLR	USD
Uva High Grown	822.96	2.73	1040.77	3.14	1141.22	3.21	917.88	3.26	525.10	2.66	562.47	2.89
Western High Grown	823.79	2.73	1212.20	3.66	1110.52	3.12	908.35	3.23	550.58	2.79	609.46	3.14
CTC High Grown	762.53	2.53	819.40	2.47	968.89	2.72	768.61	2.73	497.27	2.52	537.11	2.76
High Grown (Summary)	823.51	2.73	1160.52	3.50	1122.17	3.15	911.35	3.24	542.47	2.75	596.03	3.07
Uva Medium Grown	918.23	3.05	1055.69	3.19	1244.00	3.49	983.49	3.49	538.74	2.73	575.89	2.96
Western Medium Grown	828.76	2.75	1037.27	3.13	900.80	2.53	827.09	2.94	500.80	2.54	556.63	2.86
CTC Medium Grown	725.52	2.41	988.46	2.98	829.12	2.33	686.22	2.44	479.27	2.43	519.92	2.68
Medium Grown (Summary)	861.16	2.86	1043.15	3.15	1007.62	2.83	875.61	3.11	512.89	2.60	562.32	2.89
Orthodox Low Grown	1133.72	3.76	1327.66	4.01	1537.64	4.32	1164.41	4.14	630.93	3.20	666.15	3.43
CTC Low Grown	849.61	2.82	976.30	2.95	982.01	2.76	750.50	2.67	482.07	2.44	516.08	2.66
Low Grown(Summary)	1115.77	3.70	1308.16	3.95	1505.13	4.23	1135.68	4.03	623.18	3.16	657.17	3.38
Total	1000.82	3.32	1232.90	3.72	1330.89	3.74	1042.58	3.70	583.62	2.96	627.90	3.23

Source: Oanda Exchange Rates

Source: MSL - Averages

JUNE 2023
TOGETHER WITH THE CORRESPONDING AVERAGES FOR 2022 & 2021

	2023				2022				2021			
	MONTH		TODATE		MONTH		TODATE		MONTH		TODATE	
	SLR	USD	SLR	USD	SLR	USD	SLR	USD	SLR	USD	SLR	USD
Uva High Grown	827.02	2.75	1051.61	3.18	1039.41	2.91	911.09	3.23	525.82	2.67	564.74	2.91
Western High Grown	857.81	2.85	1222.56	3.69	1015.74	2.84	912.08	3.23	563.37	2.86	614.75	3.16
CTC High Grown	809.02	2.69	1096.97	3.32	850.16	2.38	768.51	2.72	486.90	2.47	534.14	2.75
High Grown (Summary)	848.57	2.82	1160.73	3.51	1012.07	2.83	895.93	3.17	550.44	2.79	596.94	3.07
Uva Medium Grown	872.52	2.90	1048.76	3.17	1155.23	3.24	965.55	3.42	538.48	2.73	573.32	2.95
Western Medium Grown	830.94	2.76	1037.89	3.14	906.71	2.54	826.33	2.93	509.92	2.59	556.00	2.86
CTC Medium Grown	755.84	2.51	981.46	2.97	787.48	2.21	683.14	2.42	484.28	2.46	519.80	2.67
Medium Grown (Summary)	856.12	2.85	1055.43	3.19	992.39	2.78	869.43	3.08	530.70	2.69	566.38	2.91
Orthodox Low Grown	1087.25	3.61	1329.73	4.02	1477.98	4.14	1165.50	4.13	629.80	3.20	666.30	3.43
CTC Low Grown	856.88	2.85	977.23	2.95	961.38	2.69	743.06	2.63	487.79	2.48	515.92	2.65
Low Grown(Summary)	1067.85	3.55	1297.15	3.92	1430.48	4.01	1126.38	3.99	620.09	3.15	654.73	3.37
Total	974.36	3.24	1226.08	3.71	1245.22	3.49	1028.82	3.64	586.51	2.98	626.45	3.22

Source: SLTB / Oanda Exchange Rates

MOMBASA AUCTION

SALE OF - 03RD/04TH & 05TH JULY 2023 (SALE NO. 27)

Declined interest for the 255,598 packages (16,792,901.00 kilos) on offer at irregularly easier levels with 52.72% remaining unsold.

OFFERINGS

Leaf Grades - 149,220 packages (9,729,252.00 kilos) - 62.75% unsold.
Dust Grades - 72,410 packages (5,381,961.00 kilos) - 50.13% unsold.
Secondary Grades -33,968 packages (1,684,688.00 kilos) - 14.20% unsold.

MARKETS

There was more selective interest from **Pakistan Packers** with maintained activity from **Yemen and other Middle Eastern countries. Kazakhstan and other CIS States** showed selective support while **Afghanistan and Bazaar** were less active. **Egyptian Packers** lent good enquiry at easier levels with **UK** active but selective. **Sudan, Iran and Russia** were absent. **Local Packers** were selective on account of price while **Somalia** maintained activity at the lower end of the market.

LEAF GRADES (M2)

BP1

Best - Irregular ranging between firm to USC4 above last levels with selected lines advancing by USC13; some lines were discounted by up to USC10.

Brighter - Steady to USC2 dearer where sold but many teas remained unsold.

Mediums - KTDA mediums were neglected without bids and held value where sold; plantation mediums were irregularly discounted by up to USC20.

Lower Medium - Were easier by up to USC14.

Plainer - Fair absorption but at irregular rates and varied between firm to USC9 dearer to easier by up to USC15.

PF1:

Best - Met irregular enquiry and varied between steady to USC12 above previous levels to easier by up to USC10.

Brighter - Firm to USC7 below last levels.

Mediums - KTDA mediums held value where sold while plantation mediums saw irregular interest varying between steady to mostly easier by up to USC21 but a few invoices were up to USC8 dearer.

Lower Medium - Firm to USC10 dearer for selected lines to mostly easier by up to USC17.

Plainer - Steady to mostly USC10 below previous rates but some lines gained up to USC4.

CTC QUOTATIONS	BP1 - USC	PF1 - USC
Best	255 - 280	262 - 313
Good	255 - 257	262 - 269
Good Medium	255 - 259	262 - 271
Medium (KTDA)	250 - 252	250 - 254
Medium (Plantations)	180 - 200	128 - 204
Lower Medium	093 - 160	105 - 176
Plainer	050 - 116	050 - 148

DUST GRADES (M1)

PDUST:

Best - Saw irregular interest and ranged between firm to USC12 dearer to USC11 below last levels.

Brighter - Steady to USC7 above previous rates to easier by up to USC10.

Mediums - KTDA mediums were firm where sold while plantations met good enquiry at irregular rates ranging from steady to USC6 dearer to easier by up to USC4.

Lower Medium - Firm to USC6 dearer to easier by a similar margin.

Plainer - Met irregular interest at steady to USC2 above last rates to mostly easier by up to USC17.

DUST1:

Best - Firm to USC7 easier with some lines discounted by up to USC17.

Brighter - Held value where sold but some lines lost up to USC6.

Mediums - KTDA mediums mostly remained without bids but were firm where sold with plantations steady to USC4 above previous rates.

Lower Medium - Saw irregular interest ranging between firm to mostly easier by up to USC14 but a few lines marginally gained USC6.

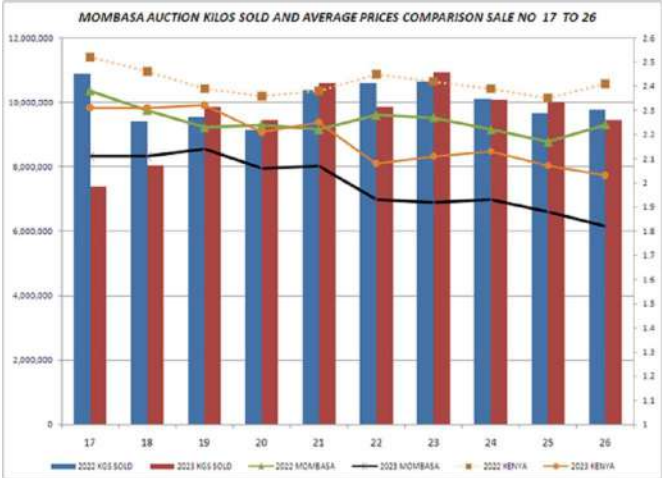
Plainer - Were easier by up to USC25 but a few Invoices were steady to USC4 above previous levels.

CTC QUOTATIONS	PDUST - USC	DUST1 - USC
Best	270 - 314	270 - 291
Good	270 - 289	270 - 272
Good Medium	270 - 280	270 - 276
Medium (KTDA)	258 - 272	245 - 271
Medium (Plantations)	200 - 260	195 - 270
Lower Medium	112 - 214	100 - 197
Plainer	062 - 178	090 - 160

SECONDARY GRADES (S1)

In the Secondary Catalogues, best **BPs** eased while others were dearer with **PFs** discounted. Clean well sorted coloury **Fannings** were easier with similar **DUSTs** shedding value. **Other Fannings** eased while **DUSTs** were about steady. **BMFs** were readily absorbed.

SECONDARY QUOTATIONS (USC)	BP / BP2	PF / PF2	FNGS1 FNGS	/DUST DUST2	/BMF
Best / Good	150 - 204	152 - 208	120 - 188	130 - 210	102
Good Medium / Medium	-	-	125 - 182	139 - 202	-
Lower Medium	089 - 142	076 - 150	059 - 136	062 - 147	054 - 078
Plainer	060 - 122	051 - 105	046 - 078	046 - 120	045 - 061



Courtesy - Africa Tea Brokers Limited

MALAWI AUCTION

SALE OF - 05TH JULY 2023 (SALE NO. 27)

There was less and selective demand at irregular rates for the 6560 packages on offer.
BP1 sold 5USC below valuation.
PF1/PD were firm on last where sold.
PF1SC held firm where sold.
Secondaries were well supported at firm to 2USC dearer.

Courtesy - Tea Brokers Central Africa Limited.

COCHIN AUCTION

SALE OF - 04TH JULY 2023 (SALE NO. 27)

CTC DUST

DEMAND: Liquoring teas - Good/ Others - Less (70% sold)

MARKET: Good liquoring teas and popular marks barely steady to tending lower by Rs.1/- to Rs.3/- and sometimes more. The remainder irregular and lower and witnessed heavy withdrawal.

BUYING PATTERN: Awt active on good liquoring teas, but very selective. Kerala state civil supplies and major packeteers (hul & tcpl) lent fair support. Devgiri tea & produce, Kerala loose tea traders and upcountry buyers subdued. Indcoserve did not operate. Exporters very selective and covered nominal quantity.

ORTHODOX DUST

DEMAND: Good (100% sold)

MARKET: Primary grades steady, while secondary lower.

BUYING PATTERN: Exporters continued to be the main stake holder.

Courtesy - Forbes, Ewart & Figgis Pot. Ltd., Cochin

BANGLADESH /KOLKATA /GUWAHATI AUCTION

The above market report details were not available at the time of printing this publication.

CROP STATISTICS IN (Mn/kgs)

					To date	To date	To date	Difference +/-	
		2021	2022	2023	2021	2022	2023	2021 vs. 2022	2022 vs. 2023
Sri Lanka	May	31.1	26.0	26.5	135.6	112.8	111.1	-22.8	-1.7
Bangladesh	May	6.15	7.42	8.17	12.07	14.48	15.71	2.41	1.23
Kenya	Apr	49.3	41.33	49.49	185.3	177.0	167.62	-8.30	-9.38
Malawi	Apr	6.4	7.07	5.90	28.6	25.9	24.9	-2.7	-1
North India	Apr	52.4	72.45	63.71	101.5	126.50	132.13	25	5.63
South India	Apr	22.3	20.80	19.06	73.1	67.93	59.85	-5.17	-8.08

CATALOGUES

SALE NO. 28 SCHEDULED FOR 18TH/19TH JULY 2023

The Ex-Estate catalogue closed on 29th June 2023, excluding violations. The Main Sale catalogues too closed on 29th June 2023, excluding violations.

SALE NO. 29 SCHEDULED FOR 25TH/26TH JULY 2023

The Ex-Estate and Main Sale catalogues are scheduled to close on 6th July 2023.

SALE NO. 30 SCHEDULED FOR 31ST JULY/2ND AUGUST 2023

The Ex-Estate and Main Sale catalogues are scheduled to close on 13th July 2023.

The details of teas awaiting sale are given on the last page of this report.

DETAILS OF TEAS AWAITING SALE

SALE NO : 27 SCHEDULED FOR 11TH/ 12TH JULY 2023

	LOT	QUANTITY kgs	LOW GROWN CATALOGUES			
Ex Estate	828	945,822	Leafy	Closed on	22/06/2023	Violations Excluded
High & Medium	1,611	774,845	Semi Leafy	Closed on	22/06/2023	Violations Excluded
Leafy	2,280	982,924	Tippy	Closed on	22/06/2023	Violations Excluded
Semi Leafy	1,495	653,305	OTHER MAIN SALE CATALOGUES			
Tippy	1,709	818,155	High & Medium	Closed on	22/06/2023	Violations Excluded
Premium Flowery	283	46,690	Dust	Closed on	22/06/2023	Violations Excluded
Off Grades	2,523	1,388,753	Premium Flowery	Closed on	22/06/2023	Violations Excluded
Dust	600	596,404	Off Grades	Closed on	22/06/2023	Violations Excluded
TOTAL	11,329	6,206,898	BOP1A	Closed on	22/06/2023	Violations Excluded
Re-print	723	391,315	Ex Estate	Closed on	22/06/2023	Violations Excluded

No of Pkgs : 167,513

CTC : 10,535 Pkgs - 569,492 kgs

SALE NO. 27 - SALE OF 11TH/ 12TH JULY 2022

BUYERS' PROMPT : 18/07/2023

Lots : 10,477Re-print Lots : 773

SELLERS' PROMPT : 19/07/2023

Quantity : 5,410,931 kgsRe-print Quantity : 410,858 kgs

SALE NO : 28 SCHEDULED FOR 18TH/ 19TH JULY 2023

	LOT	QUANTITY kgs	LOW GROWN CATALOGUES			
Ex Estate	806	919,185	Leafy	Closed on	29/07/2023	Violations Excluded
High & Medium	1,560	766,539	Semi Leafy	Closed on	29/07/2023	Violations Excluded
Leafy	2,146	889,296	Tippy	Closed on	29/07/2023	Violations Excluded
Semi Leafy	1,502	652,733	OTHER MAIN SALE CATALOGUES			
Tippy	1,617	770,925	High & Medium	Closed on	29/07/2023	Violations Excluded
Premium Flowery	287	48,126	Dust	Closed on	29/07/2023	Violations Excluded
Off Grades	2,508	1,373,263	Premium Flowery	Closed on	29/07/2023	Violations Excluded
Dust	613	617,319	Off Grades	Closed on	29/07/2023	Violations Excluded
TOTAL	11,039	6,037,386	BOP1A	Closed on	29/07/2023	Violations Excluded
Re-print	647	373,561	Ex Estate	Closed on	29/07/2023	Violations Excluded

No of Pkgs : 161,120

CTC : 10,135 Pkgs - 548,593 kgs

SALE NO. 28 - SALE OF 19TH/ 20TH JULY 2022

BUYERS' PROMPT : 25/07/2023

Lots : 10,396Re-print Lots : 695

SELLERS' PROMPT : 26/07/2023

Quantity : 5,404,730 kgsRe-print Quantity : 368,581 kgs

SALE NO : 27 SCHEDULED FOR 11TH/ 12TH JULY 2023

ORDER OF SALE			Approximate Selling Time of F&W Catalogues	
EX ESTATE	LG Large Leaf/Semi Leafy/LG Small Leaf/BOPIA/Prem	High & Medium/Off Grade/Dust	11TH JULY 2023	
			Semi Leafy Teas	11.30am
LC	LC	LC	Tippy Teas	12.00pm
BC	AS	CTB	Leafy Teas	01.45pm
MB	MB	EB	Main Sale- High & Medium	02.15pm
AS	EB	JK	Premium Flowery	05.00pm
FW	FW	AS	12TH JULY 2023	
EB	CTB	MB	BOP1A	09.00am
CTB	BC	FW	Ex-Estate	09.45am
JK	JK	BC	Off Grades	11.30am
			Dust	03.00pm
FW - Forbes & Walker Tea Brokers (Pvt) Ltd		AS - Asia Siyaka Commodities PLC		
JK - John Keells PLC		MB - Mercantile Produce Brokers (Pvt)Ltd		
BC - Bartleet Produce Marketing (Pvt) Ltd		LC - Lanka Commodity Brokers (Pvt) Ltd		
EB - Eastern Brokers Ltd		CTB - Ceylon Tea Brokers PLC		